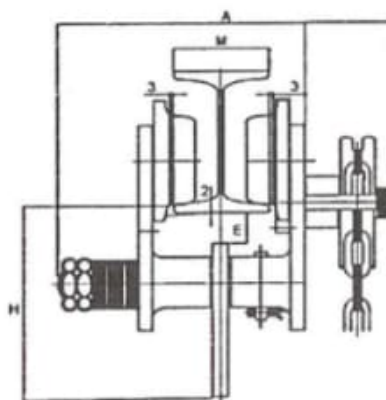
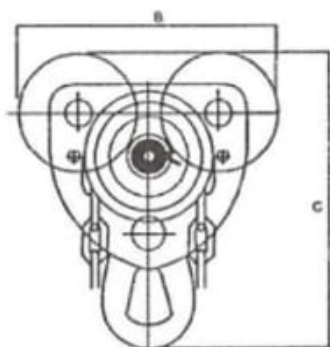




- * Measure the actual width of the runway beam;
- * Assemble the required number of spacer washers equally to the inside of the trolley side plates so that the dimension between Trolley wheel flanges is 6 mm of 1/4(max) greater than the runway beam width. Assemble the remaining washers outside the trolley side plate & fit nuts to hanger pin. THERE MUST ALWAYS BE AT LEAST ONE WASHER ON THE INSIDE & THE OUTSIDE OF EACH TROLLEY SIDE PLATE (see diagram N).
- * Slacken off the hanger pin nuts & spread the side plates so that the wheels can be slipped up over the runway beam. Screw the nuts firmly against the washers, then suspend a light load from the trolley to ensure that all four wheels contact the runway beam. Screw the nuts tightly against the washers then secure with lockouts.



Product Detail:

Model		AG-05	AG-1	AG-2	AG-3	AG-5
Rate load(Ton)		0.5	1	2	3	5
The test load(kn)		7.35	14.71	29.42	44.13	61.29
The min. bending radius(m)		0.9	1	1.1	1.3	1.4
Dimensions (mm)	a	275	255	270	340	350
	b	210	220	280	306	335
	c	164	185	225	252	270
	d	45	60	65	75	80
Recommended i-steel(mm)		75-125	100-150	100-150	125-175	125-175